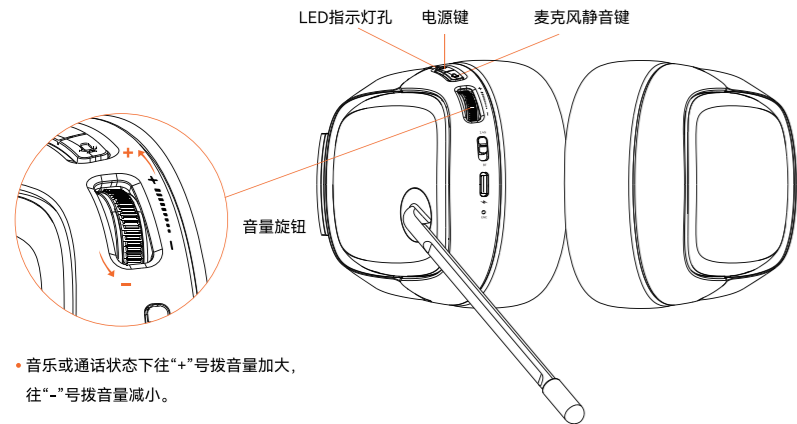


按键功能 ATK GEAR

- 开机: 长按“电源键”3S 开机至蓝灯后, 2.4G模式下白灯慢闪开始搜索信号; 蓝牙模式下蓝灯慢闪开始搜索信号;
- 关机: 长按“电源键”3S 关机, 红灯闪一下熄灭。

- 游戏/音乐模式切换: 双击电源键切换。

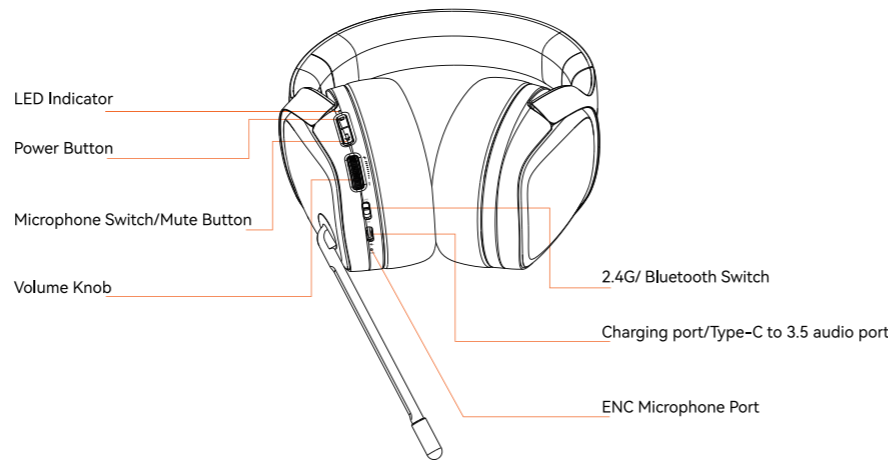


- 音乐或通话状态下往“+”号拨音量加大, 往“-”号拨音量减小。

- 注: 未配对状态下 5 分钟后耳机自动关机; 2.4G状态下, 无音源输出到耳机15分钟后, 耳机自动关机; 蓝牙状态下耳机不会自动关机, 需要手动关闭耳机; 耳机开机状态下插上Type-C数据线, 耳机自动关机。
- 虚拟 7.1 声道, 电脑安装上 dongle 驱动即可体验, 驱动只支持 Win10 以上系统。

- LED 指示
信号搜索: 白灯慢闪 (2.4G模式)
蓝灯慢闪 (蓝牙模式)
- 连接成功: 白灯长亮
- 电池电量低: 红灯闪烁。(提示音 low battery)
- 充电状态: 红灯长亮
- 充满电: 蓝灯长亮

Product Overview ATK GEAR

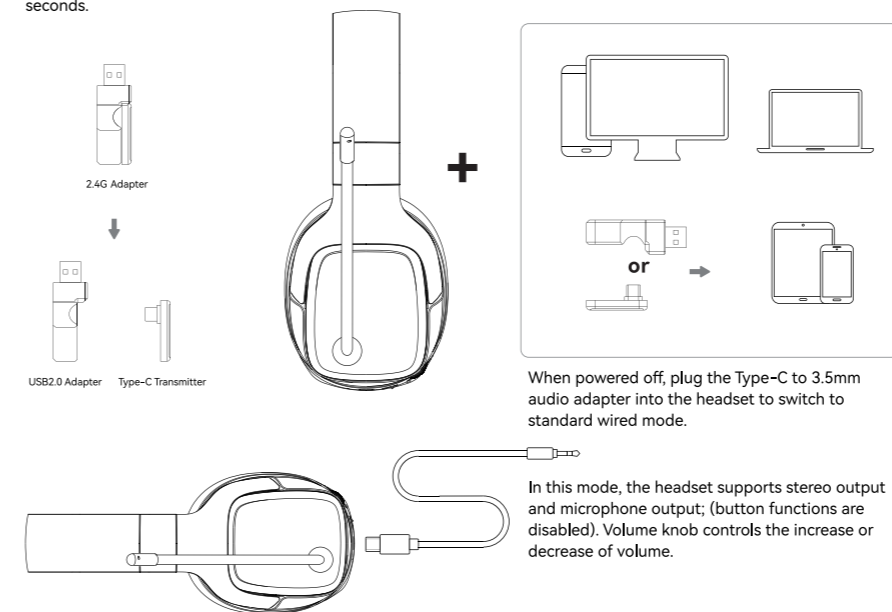


Model	ATK Mercury I	Frequency Response Range	20Hz-20kHz
MIC Sensitivity	-38±2dB	Speaker	50mm
SPK Sensitivity	118±3dB	Speaker Impedance	32Ω±15%
Battery Capacity	1200mAh	Standby Time	Connection standby approximately 120H/Shutdown Standby 20000H
Connection Distance	< 10m	Charging Time	2-3 hours
Audio System	Stereo	Rated Power	10mW
Connectivity	2.4G/ Bluetooth/Wired	Maximum Power	20mW
Product Weight	Approximately 370g±5%g	Output Charge Markup	USB Type-C
Bluetooth Version	New Generation of Bluetooth 5.3 Transmission Technology	Audio delay	< 30ms

Note: The images in this manual are for illustrative purposes only and may differ from the actual product. Please refer to the actual product for accuracy.

Connectivity ATK GEAR

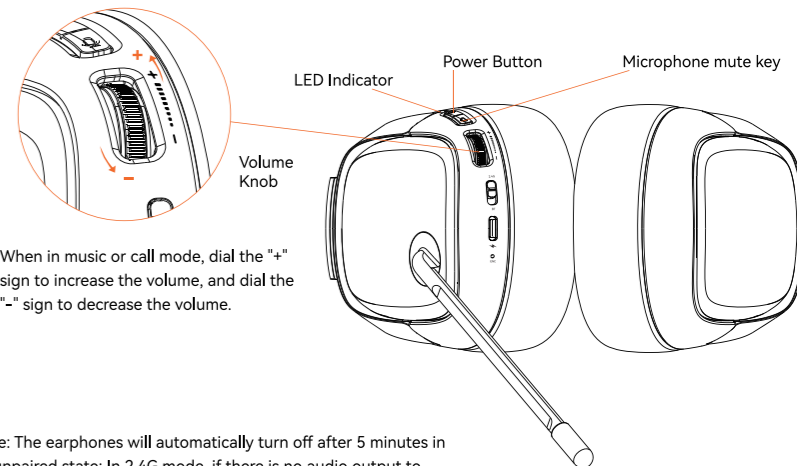
- 2.4G connection method: Set the mode lever to 2.4G mode and connect the wireless USB adapter to any USB port on the PC that can work normally without installing any drivers. This product automatically matches the code when turned on; When the connection is successful, the white light of the working indicator is always on; Disconnect the connection, and when the earphones are paired, the white light flashes slowly.
- Bluetooth connection method: Set the button to Bluetooth mode (BT), find the device name "ATK Mercury I" on the device to be connected, and click connect. When the connection is successful, the blue indicator light remains on. If you need to connect a new device while pairing with an old device, you need to clear the headphone pairing record.
- Clear headphone pairing record method: Press the power button and microphone mute button simultaneously for 3 seconds.



When hearing [insufficient power, please recharge] or the power indicator light flashes red once every 1.5 seconds, please charge the headset promptly.

Key Functions ATK GEAR

- Power On: Press and hold the "power button" for 3 seconds until the blue light is turned on. In 2.4G mode, the white light slowly flashes to start searching for signals; In Bluetooth mode, the blue light flashes slowly to start searching for signals;
- Power Off: Press and hold the "power button" for 3 seconds to shut down; The red light flickered and went out.
- Game/Music mode switch: Double-click power button.
- Microphone Mute Button: Single-click the mute button to mute/unmute the microphone. Double-click the mute button to turn the headset's ambient light on/off.



- When in music or call mode, dial the "+" sign to increase the volume, and dial the "-" sign to decrease the volume.

- Note: The earphones will automatically turn off after 5 minutes in an unpaired state; In 2.4G mode, if there is no audio output to the earphones for 15 minutes, the earphones will automatically shut down; The earphones will not automatically shut down in Bluetooth mode and need to be manually turned off; When the headphones are turned on and the Type-C data cable is plugged in, the headphones will automatically shut down.
- Virtual 7.1 channel, can be experienced by installing dongle driver on the computer, the driver only supports Win10 and above systems.

- LED Instructions
Signal Searching: Slow flashing white light (2.4G mode); Blue light flashing slowly (Bluetooth mode)
- Successful Connection: Solid White
- Low Battery: Red light flashes.
- Charging Status: Solid Red
- Fully Charged: Solid Blue

1. 本产品2.4G功能符合“微功率短距离无线电发射设备目录和技术要求”的通用微功率设备F类设备要求，使用频率：2400-2483.5MHz，发射功率限值：10mW(e.r.p)，频率容限75kHz，天线类型为板载天线，设备开机后通过硬件开关选择进入微功率模式，若要退出微功率模式，则相应地通过硬件关闭开关操作，进入其他模式；
2. 不得擅自改变使用场景或使用条件、扩大发射频率范围、加大发射功率（包括额外加装射频功率放大器），不得擅自更改发射天线；
3. 不得对其他合法的无线电台（站）产生有害干扰，也不得提出免受有害干扰保护；
4. 应当承受辐射射频能量的工业、科学及医疗（ISM）应用设备的干扰或其他合法的无线电台（站）干扰；
5. 如对其他合法的无线电台（站）产生有害干扰时，应立即停止使用，并采取消除措施后方可继续使用；
6. 在航空器内和依据法律法规、国家有关规定、标准划设的射电天文台、气象雷达站、卫星地球站（含测控、测距、接收、导航站）等军民用无线电台（站）、机场等的电磁环境保护区域内使用微功率设备，应当遵守电磁环境保护及相关行业主管部门的规定；
7. 禁止在以机场跑道中心点为圆心、半径5000米的区域内使用各类模型遥控器；
8. 微功率设备使用时满足温度（25摄氏度）和电压（DC：5V）的环境条件。

1. The 2.4G function of this product meets the requirements of Class F general low-power devices in the "Catalogue and Technical Requirements for Micro Power Short Range Radio Transmission Devices". The operating frequency is 2400-2483.5MHz, the transmission power limit is 10mW (e.r.p), the frequency tolerance is 75kHz, and the antenna type is an onboard antenna. After the device is turned on, the hardware switch is used to select the micro power mode. To exit the micro power mode, the corresponding hardware switch is turned off to enter other modes;
2. Do not change the usage scenario or conditions, expand the transmission frequency range, increase the transmission power (including installing additional RF power amplifiers), or change the transmission antenna without authorization;
3. No harmful interference shall be caused to other legitimate radio stations, nor shall protection against harmful interference be proposed;
4. Should withstand interference from industrial, scientific, and medical (ISM) application equipment that radiates radio frequency energy or other legitimate radio stations (stations) interference;
5. If harmful interference occurs to other legitimate radio stations, the use should be immediately stopped and measures should be taken to eliminate the interference before continuing to use;
6. The use of low-power equipment in the electromagnetic environment protection areas of military and civilian radio stations (stations) such as radio observatories, meteorological radar stations, satellite earth stations (including measurement and control, ranging, reception, navigation stations), airports, etc. designated in accordance with laws, regulations, relevant national provisions, and standards shall comply with the regulations of the electromagnetic environment protection and relevant industry regulatory authorities;
7. Prohibit the use of various model remote controllers within a radius of 5000 meters from the center point of the airport runway;
8. When using low-power devices, they should meet the environmental conditions of temperature (25 degrees Celsius) and voltage (DC: 5V).

制造商: 深圳意义之塔科技有限公司
 制造商地址: 深圳市宝安区新安街道海旺社区兴华一路(延伸段)19号
 中兴酒店(前海HOP国际)1901

Manufacturer: Shenzhen Yizhita Technology Co., Ltd
 Manufacturer Address: Room 1901, Qianhai HOP INTl, No. 19 Xinghua
 1st Rd (Extension), Bao'an District, Shenzhen, Guangdong, China.

ATK GEAR 设计 | 中国制造

Made in China

ATK GEAR

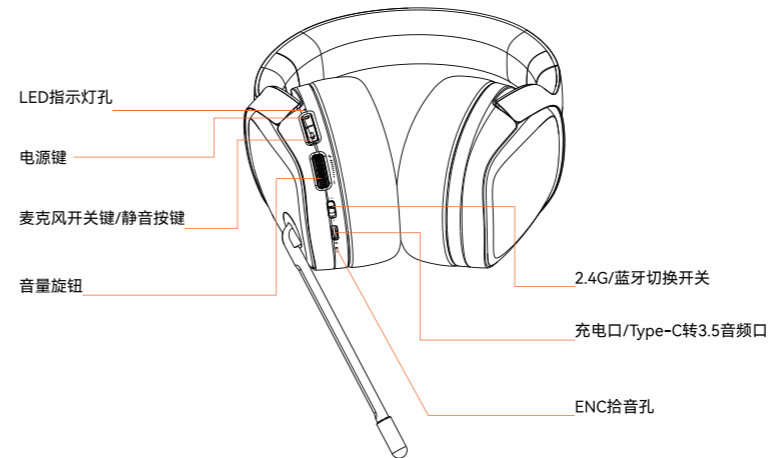
ATK MERCURY

WIRELESS GAMING HEADSET

USER MANUAL

使用手册

产品概述 ATK GEAR

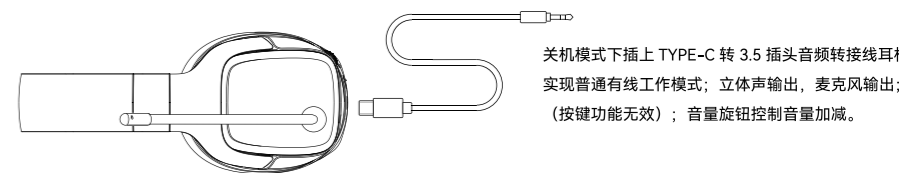
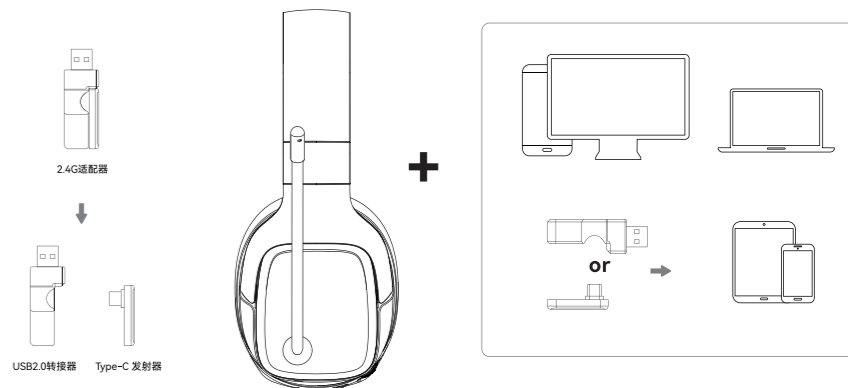


型号	ATK Mercury I	频响范围	20Hz-20kHz
MIC灵敏度	-38±2dB	喇叭	50mm
SPK灵敏度	118±3dB	喇叭阻抗	32Ω±15%
电池容量	1200mAh	待机时长	连接待机约120H/关机待机约20000H
连接距离	< 10m	充电时间	2-3 小时
声道系统	立体声	额定功率	10mW
连接方式	2.4G / 蓝牙 / 有线连接	最大功率	20mW
产品重量	约 370g±5%g	输出充电标注	USB Type-C
蓝牙版本	全新一代蓝牙5.3传输技术	音频延迟	< 30ms

温馨提示: 本说明书中的图片均为示意图,可能与实物有偏差,请以实物为准。

连接模式 ATK GEAR

- 2.4G连接方式:将模式拨杆拨至2.4G模式, 并将无线USB适配器连接到PC上可正常工作的任何USB端口, 无需安装任何驱动程序即可使用, 本产品开机自动对码; 连接成功时工作指示灯白灯常亮; 断开连接, 耳机配对状态下, 白灯慢闪。
- 蓝牙连接方式:将按钮拨至蓝牙模式 (BT), 在待连接设备上找到设备名“ATK Mercury I”, 点击连接即可。连接成功时工作指示灯蓝灯常亮。如需在配对上旧设备的状态下, 连接新设备, 则需清除耳机配对记录。
- 清除耳机配对记录方式:同时按下电源键和麦克风静音键3秒。



当听到【电量不足, 请及时充电】或【电源指示灯】红灯每1.5秒闪烁一次时, 请及时给耳机进行充电。